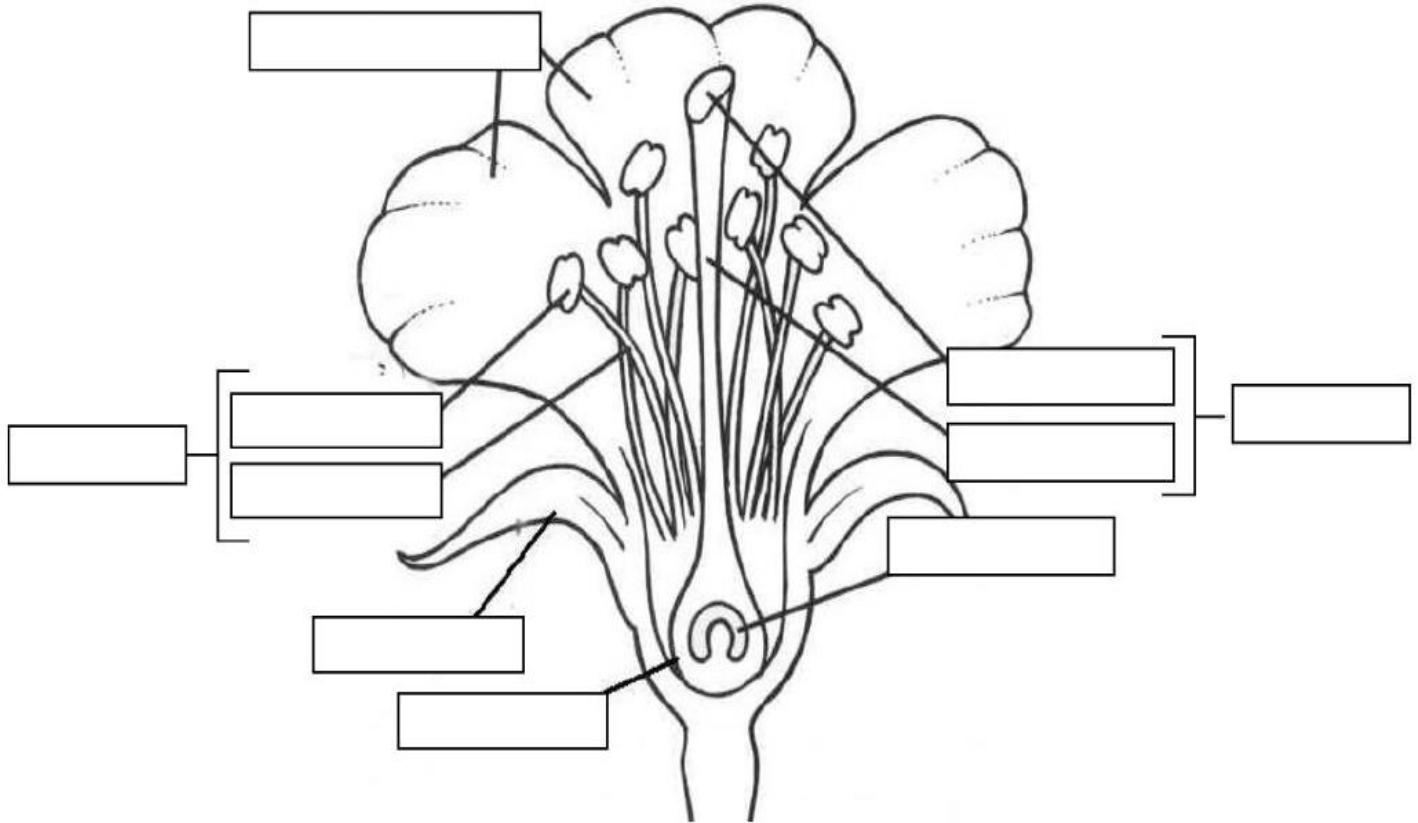


Name:

Lab: Flower Dissection

**PreLab:**

1. Fill in the names of the structures in the flower diagram below.



2. What is a pollinator? \_\_\_\_\_
3. List 3 pollinators: \_\_\_\_\_

**Procedure--examine your flower and compare it to the diagram above. (you may remove parts as needed)**

4. Describe the color of the petals: \_\_\_\_\_
5. How many petals does your flower have? \_\_\_\_\_
6. Describe the color of the sepals: \_\_\_\_\_
7. How many sepals does it have? \_\_\_\_\_
8. Carefully open your flower and find the reproductive parts. How many pistils? \_\_\_\_\_
9. Describe the stigma (color, shape, anything else you notice).  
\_\_\_\_\_  
\_\_\_\_\_
10. Find the ovary at the base of the pistil. Describe its appearance:  
\_\_\_\_\_
11. Is it located above or below the sepals? \_\_\_\_\_

12. Carefully remove the pistil with the ovary. Draw a picture of the pistil. **Label the stigma, style, and ovary.**

13. Use the sharp tip of the probe to cut into the ovary. How many ovules (eggs) do you find? \_\_\_\_\_

14. Locate the stamens. Describe their color and appearance.

---

---

15. Draw a picture of one stamen. **Label the filament and anther.**

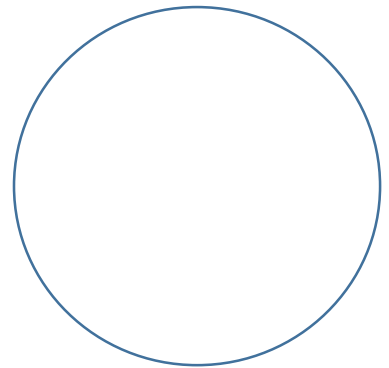
16. Use a microscope to look at the anther by placing it on a slide. Do you notice small round pollen grains?

17. Draw what you see in circle, describe what you see below:

---

---

---



### **Analysis**

18. Is reproduction in plants sexual or asexual? \_\_\_\_\_

19. Ovules have the potential to become \_\_\_\_\_ when fertilized.

20. Describe the path pollen takes to get to the ovules.

---

---

21. List the male reproductive structures of a flowering plant:

---

22. List the female reproductive structures of a flowering plant:

---